

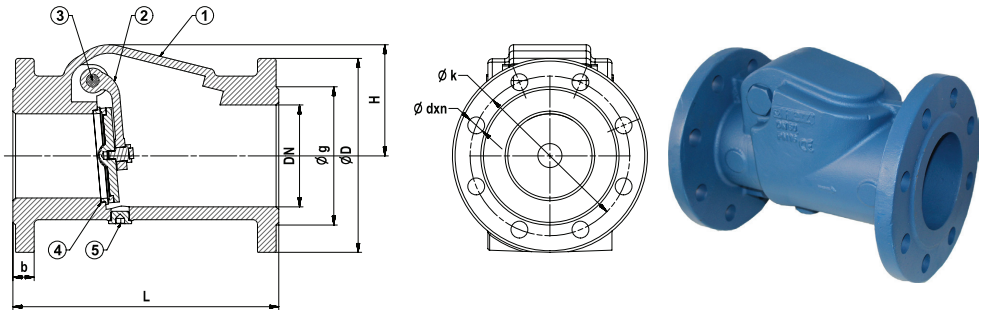
HERZ - Swing check valve

Data sheet 2622 SCV, Issue 0416 ME

Dimensions in mm

Materials

- Body (1) GG25
- Disc (2) GGG40
- Stem (3) Stainless steel
- Seats (4) Brass
- Plug (5) CW617N Steel St37



Order number	4 2622 21	4 2622 22	4 2622 23	4 2622 24	4 2622 25	4 2622 26	4 2622 27	4 2622 28		
DN	mm	65	80	100	125	150	200	250	300	
L	mm	240	260	300	350	400	500	600	700	
H	mm	87	104	125	157	186	240	295	372	
D	mm	185	200	220	250	285	340	405	460	Flange
k	mm	145	160	180	210	140	295	355	410	
g	mm	118	132	156	184	211	266	319	370	
b	mm	20	22	24	26	26	20	22	25	
d	mm	19	19	19	19	23	23	28	28	
n		4	8	8	8	8	12	12	12	Hole qty.
Weight	kg	10,5	14	20	30	43	70	120	164	

Specification

- Temperature range: -10°C ... +110°C
- Pressure rate: PN16
- Flange Dimensions: according to EN1092-2
- Design standard: EN 12334
- Coating: painted blue RAL5000

For hot and cold water systems for fluids excluding acid and flammable fluids. Heating water quality according ÖNORM H5195 or VDI-Standard 2035. The use of ethylene or propylene glycol in a mixing ratio 25- 50% is allowed.

Pressure loss calculation

The pressure loss in the valve can be calculated with below given formula.

1. $h_v = \frac{\zeta \cdot c^2}{2g}$
 - h_v pressure loss (m)
 - Δp pressure loss (kp/m² = mmSS)
 - c flow rate (m/s)
 - ζ pressure loss coefficient
2. $\Delta p = \frac{\gamma \cdot h_v}{10000} = \zeta \frac{\gamma \cdot c^2}{2g}$
 - γ density (kp/m²)
 - g 9,81 m/s²

DN		65	80	100	125	150
VH m/s		3,9	2,3	1,6	2,8	1,6
VV m/s		2,1	2,0	1,6	2,8	1,6
ζ	VH	0,3	0,7	0,6	1,0	0,9
	VH/2	0,6	1,1	1,2	1,3	1,5
	VH/4	1,4	3,5	4,0	2,3	
	VV	0,3	0,7	0,6	1,0	0,9
	VV/2	0,8	1,1	1,2	1,3	1,5
	VV/4	10,0	12,0	6,0	3,5	

All specifications and information within this document are reflecting the information available at the time of going to print and meant for informational purpose only. Herz Armaturen reserves the right to modify and change products as well as its technical specifications and/or its function according to technological progress and requirements. All diagrams are indicative in nature and do not to be complete. It is understood that all images of Herz products are symbolic representations and therefore may visually differ from the actual product. Colours may differ due to printing technology used. In case of any further questions don't hesitate to contact your closest HERZ Branch-Office.